

Revision History

Revision	Date	Description
A	August 2, 2005	Initial Release

© 2005, Conexant Systems, Inc.
All Rights Reserved.

Information in this document is provided in connection with Conexant Systems, Inc. ("Conexant") products. These materials are provided by Conexant as a service to its customers and may be used for informational purposes only. Conexant assumes no responsibility for errors or omissions in these materials. Conexant may make changes to this document at any time, without notice. Conexant advises all customers to ensure that they have the latest version of this document and to verify, before placing orders, that information being relied on is current and complete. Conexant makes no commitment to update the information and shall have no responsibility whatsoever for conflicts or incompatibilities arising from future changes to its specifications and product descriptions.

No license, express or implied, by estoppel or otherwise, to any intellectual property rights is granted by this document. Except as provided in Conexant's Terms and Conditions of Sale for such products, Conexant assumes no liability whatsoever.

THESE MATERIALS ARE PROVIDED "AS IS" WITHOUT WARRANTY OF ANY KIND, EITHER EXPRESS OR IMPLIED, RELATING TO SALE AND/OR USE OF CONEXANT PRODUCTS INCLUDING LIABILITY OR WARRANTIES RELATING TO FITNESS FOR A PARTICULAR PURPOSE, CONSEQUENTIAL OR INCIDENTAL DAMAGES, MERCHANTABILITY, OR INFRINGEMENT OF ANY PATENT, COPYRIGHT OR OTHER INTELLECTUAL PROPERTY RIGHT. CONEXANT FURTHER DOES NOT WARRANT THE ACCURACY OR COMPLETENESS OF THE INFORMATION, TEXT, GRAPHICS OR OTHER ITEMS CONTAINED WITHIN THESE MATERIALS. CONEXANT SHALL NOT BE LIABLE FOR ANY SPECIAL, INDIRECT, INCIDENTAL, OR CONSEQUENTIAL DAMAGES, INCLUDING WITHOUT LIMITATION, LOST REVENUES OR LOST PROFITS, WHICH MAY RESULT FROM THE USE OF THESE MATERIALS.

Conexant products are not intended for use in medical, lifesaving or life sustaining applications. Conexant customers using or selling Conexant products for use in such applications do so at their own risk and agree to fully indemnify Conexant for any damages resulting from such improper use or sale.

The following are trademarks of Conexant Systems, Inc.: Conexant® and the Conexant C symbol. Product names or services listed in this publication are for identification purposes only, and may be trademarks of third parties. Third-party brands and names are the property of their respective owners.

For additional disclaimer information, please consult Conexant's Legal Information posted at www.conexant.com which is incorporated by reference.

Reader Response: Conexant strives to produce quality documentation and welcomes your feedback. Please send comments and suggestions to conexant.tech.pubs@conexant.com. For technical questions, contact your local Conexant sales office or field applications engineer.

Contents

- Figures 5
- CX23880 64-Bit PCI TV/FM Cards WHQL
- Submission Guidelines 7
 - Purpose7
 - Procedure7
- Appendix A: Sample NTSC 64-Bit TV/FM
- Readme Document 20
 - Submission Information20
 - Testing Exceptions21
 - Additional Information23
- Appendix B: Sample PAL 64-Bit TV/FM Readme Document 24
 - Submission Information24
 - Testing Exceptions25
 - Additional Information27
 - Submission Information28
 - Testing Exceptions28
 - Additional Information31
- Appendix C: TV/FM Cards with MPEG Hardware Encoder..... 32

Figures

Figure 1.	Log-On Screen	8
Figure 2.	Submissions Window	8
Figure 3.	Submission Type	8
Figure 4.	Categorize Product	9
Figure 5.	OS Screen	9
Figure 6.	Detail Product Screen	10
Figure 7.	Product Data	12
Figure 8.	Add Drivers	13
Figure 9.	Add Test Logs	13
Figure 10.	Select PnP IDs	14
Figure 11.	Driver Distribution Settings	14
Figure 12.	View Billing Info.	15
Figure 13.	Driver and Upload Directories	15
Figure 14.	Conexant Submission Screen	16
Figure 15.	Signing Options.	16
Figure 16.	VeriSign Screen	17
Figure 17.	Additional Certificates Screen	17
Figure 18.	Data Description	18
Figure 19.	Timestamping	18
Figure 20.	Digital Signing Wizard Message	19
Figure 21.	Uploading the Submission Package	19

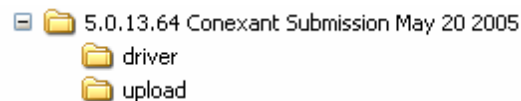
CX23880 64-Bit PCI TV/FM Cards WHQL Submission Guidelines

Purpose

This procedure shows how to submit the Microsoft Windows Hardware Quality Laboratory (WHQL) test results. Use this procedure after WHQL testing is complete. You will need the driver files as well as the cab file created by the WHQL testing. You will also need a VeriSign kit from Microsoft to do a WHQL submission.

Procedure

1. Create the following folders on your hard drive:



2. Use the driver version, company name, and the date for the top folder.
3. Add to the driver folder files such as .if,.cat,.sys. from the driver that was WHQL tested.

NOTES:

The cat file at this time is not signed.

Do not modify the files. Just one added space to the INF file invalidates the test results.

4. The upload folder contains the whql results, whqlhct.cab and a readme.doc. See [Appendix A](#) and [Appendix B](#) for samples of readme documents. All test failures or test not run must be explained.
5. Click the following URL:
<https://winqual.microsoft.com>
6. Log onto submissions at the screen shown in [Figure 1](#):

Figure 1. Log-On Screen



Figure 2. Submissions Window

**Submissions**

Submit your products to be logo'd for "Designed for Windows", "Certified for Windows", "Designed for Windows" and the ".NET Connected" logo. The most effective way for your customers to identify hardware products that work well with Microsoft Windows operating systems.

7. Select your submissions, as shown in [Figure 3](#):
8. From the screen shown in [Figure 3](#), click First Time, then press Next.

Figure 3. Submission Type

Select Submission Type

Select the category you want to create a submission for, and then click **Next** to begin the wizard.

NOTE If you cannot find the submission type that you are looking for, you may need to accept the appropriate legal agreements. [View legal agreements](#).

IMPORTANT We no longer accept logo submissions for Windows 2000 systems or devices. [Learn more](#)

[Processing time for submissions.](#)
[Information about and steps for the different submission types.](#)

First-time hardware and driver test submissions

This category includes all first-time hardware and driver submissions

9. From the display shown in [Figure 4](#), select Submission Type.
10. Select Video Capture/TV Tuner, as shown in [Figure 4](#).

Figure 4. Categorize Product

Categorize Product

Hardware category: Video Capture/TV Tuner

If you have a multi-function device, such as a keyboard with a USB hub or a combination printer and scanner, select **Multi-Function** in the **Hardware category** list.

Note If you return to this page and change your hardware category selection, you must reenter all of your submission data.

11. Select the Operating System (OS). For the 64-bit OS, click Microsoft Windows XP Professional x64 Edition, as shown in [Figure 5](#):

Figure 5. OS Screen

Select OS

Operating systems:

Select the operating systems for this product.

- Microsoft® Windows Server™ 2003 family, x86
- Microsoft® Windows Server™ 2003 family, x64
- Microsoft® Windows Server™ 2003 family, IA64
- Microsoft® Windows XP™ family, IA64
- Microsoft® Windows XP™ Professional x64 Edition
- Microsoft® Windows XP™ family, x86
- Microsoft® Windows 2000 family, x86

12. On the Detail Product screen shown in [Figure 6](#), provide requested information about your video capture/TV tuner.

Figure 6. Detail Product Screen

Detail Product

Provide the following information about your Video Capture/TV Tuner product:

Important If any of the information on this form appears on the Hardware Compatibility List (HCL), it will appear exactly as you enter or type it below. To ensure the accuracy of this information, please review the information carefully and ensure that all fields contain valid entries before clicking **Next**. All fields are required unless otherwise noted.

Implementation:

Hardware/Firmware Version:

Driver/Software Version:

Latest Version of DirectX Supported:

Bus Types:
Select all of the bus types that your product supports.

- PCI
- PCI Express
- IEEE 1394
- USB 1.1
- USB 2.0
- PC Card
- CARD-BUS
- AGP
- Bluetooth
- Ethernet

USB 1.1 Bus Speed (Optional): <i>* USB 1.1 bus type only</i>	<input type="checkbox"/> Low Speed (1.5 mbps) <input type="checkbox"/> Full Speed (12 mbps)
USB 2.0 Bus Speed (Optional): <i>* USB 2.0 bus type only</i>	<input type="checkbox"/> Low (1.5 mbps) <input type="checkbox"/> Full (12 mbps) <input type="checkbox"/> Hi (480 mbps)
Chipset Name:	<input type="text" value="Cx23881"/>
Chipset Version:	<input type="text" value="Cx23881-19"/>
Analog inputs: Select all of the analog inputs that your product supports. (Optional)	<input checked="" type="checkbox"/> S-Video <input checked="" type="checkbox"/> Composite <input type="checkbox"/> Component
TV/Video formats supported:	<input type="checkbox"/> NTSC <input checked="" type="checkbox"/> PAL <input type="checkbox"/> SECAM <input type="checkbox"/> ATSC <input type="checkbox"/> DVB-T <input type="checkbox"/> DVB-S
Number of RF inputs for TV/Video:	<input type="text" value="1"/>
Number of RF inputs for FM Radio:	<input type="text" value="0"/>
Number of A/V streams the device can capture simultaneously:	<input type="text" value="1"/>
Driver model:	<input type="text" value="AVStream"/>
Does the device support real-time compression of analog signals:	<input type="text" value="No"/>
Real-time compression formats supported:	<input type="checkbox"/> MPEG1 <input type="checkbox"/> MPEG2 <input type="checkbox"/> MPEG4 <input type="checkbox"/> WMV9 <input type="checkbox"/> Other <input type="checkbox"/> None
If the device supports compression, is the audio compression performed in hardware or software:	<input type="text" value="N/A"/>
If the device supports compression, is the video compression performed in hardware or software:	<input type="text" value="N/A"/>

13. Enter the product data on the screen shown in [Figure 7](#)**Figure 7. Product Data**

Windows Quality Online Services: First-time hardware and driver test submissions - Microsoft Internet Explorer

File Edit View Favorites Tools Help

Address <https://winqual.microsoft.com/members/create.asp>

Select Submission Type
 Categorize Product
 Select OS
 Select Contacts
 Detail Product
 Enter Product Data
 Add Drivers
 Add Test Logs
 Select PnP IDs
 Driver Distribution Settings
 View Billing Info
 Select a Testing Location
 Accept Legal Agreement
 Create Upload Package
 Package Created

Windows Error Reports
Home
Kernel Mode
User Mode

Driver Distribution Center
Home

Submissions
Create
View & Manage

Enter Product Data

All fields are required unless otherwise indicated.

Important You must use the Product Listing Wizard to add your product to a list, catalog, or directory. Please see the [About the Product Listing Wizard](#) Help topic in the Windows Quality Online Services User's Guide for details.

Product announcement date:
You must enter an announcement date if you want your product to appear in the Hardware Compatibility List (HCL), Windows Catalog, Windows Server Catalog, or .NET Connected Directory.

My product will never be announced, and/or I do not want my product to appear in the Windows Catalog, HCL, Windows Server Catalog, or .NET Connected Directory.

My product was or will be announced on: May 25 2005

Product reference name:
Select a product reference name for your product by considering the following:

- Select a name that is an actual product name, not a nickname.
- This submission will always be linked to the name you select and cannot be changed in the Product Listing Wizard.
- Hardware product reference names must comply with the [WHQL Product Naming Requirements](#).

Cx23881ConexantPAL TV

Platforms:
Select each platform you support for this product.

Microsoft® Windows XP™ Professional x64 Edition:

Microsoft® Windows XP Professional x64 Edition

***Important** If you select the Windows Server 2003, Datacenter Edition, you must include a DCDP 14-day Stress test log for the following devices:

- Networking
- Storage, including SCSI, RAID, and Fibre Channel
- Anti-virus

You do not need to include a DCDP 14-day Stress log if the product has been previously qualified for Datacenter and if there are no changes in functionality.

Internet

14. On the Add Drivers screen shown in [Figure 8](#), do the following:
 - a. Select the OS
 - b. Click Browse and select the drivers directory you created.
 - c. Click Include in package and press cancel. Do not include any debug files.
 - d. Click English.

Figure 8. Add Drivers

Add Drivers

Drivers included with the operating system:

If some or all of your product's drivers are available on the operating system CD, then select those operating systems in this section.

Note You cannot make any changes to the **Drivers not included with the operating system** section after you add drivers. If you need to make changes, you can click **Refresh** to start over. You will lose any data you have entered on or after this page.

INF Requirements for 64-bit Systems

[Changes to INF Requirements for the Microsoft® Windows Server™ 2003 Service Pack 1 Operating System](#)

Microsoft® Windows Server™ 2003 SP1 and later versions of Windows do not install driver packages with undecorated INF sections on non-x86-based 64-bit systems (Intel Itanium and AMD64). This paper describes changes to INF requirements that affect device installation on non-x86-based 64-bit systems.

Microsoft® Windows XP™ Professional x64 Edition

Drivers not included with the operating system:

Add each driver individually by repeating **Steps 1-3** below until you add all of the drivers for this submission.

Note: All of the drivers **must** be for the same tested device.

You cannot change your operating system selections after you select a driver and add it to your driver package.

1. Select the operating systems.

Microsoft® Windows XP™ Professional x64 Edition

2. Browse or type the driver package directory path.

Browse or type the path to the driver package directory, and then click **Include in Package**. When you click **Include in Package**, you are prompted to add your driver symbol files.

Browse to the driver symbols folder and do one of the following:

- Click **OK**.
- or
- Click **Cancel** if you want to continue the submission without adding the files.

Note: If you specify a large directory (such as C:\Windows) as the driver package directory, the driver processing might take several hours. If you need to, you can cancel driver processing by terminating **MercProg.exe** in your operating system's Task Manager.

If you were unable to add your drivers to the test submission package, you can click **View Results** to learn more about the processing error that occurred, and then try to add the driver package again.

Browse	C:\5.0.13.64 Conexant Submission May 20 2005\driver
<input type="button" value="Include in Package"/>	

3. Expand driver packages and select supported languages and/or categories.

Expand each driver package, and then select the languages and/or categories that each driver supports.

15. Add test logs, as shown in [Figure 9](#). Select the upload directory that you created to upload the WHQL results and the readme file.

Figure 9. Add Test Logs

Add Test Logs

Browse to the folder that contains your log files for each operating system listed below. The folder should contain only those files that you want to upload to the Windows Quality Online Services. In the folder, you can include the [WHQL Submission Readme](#) form to document testing exceptions for your test submission, and to provide any additional information your submission type requires or that Winqual requests. Do not include any other type of Readme file in your submission package.

Current HCT log requirements:

- For all OS(s) families, except x64, Winqual will accept logs generated via HCT Versions 11.2, 12.0 and 12.1.
- For all x64 Bit OS families, Winqual will only accept logs generated via HCT version 12.1

The following do not require test logs:

- Reseller program test submissions
- Win2K submissions

Important In the WHQL Submission Readme form (or elsewhere), do not include or make reference to e-mail "waivers" or exceptions. Testing exceptions are only accepted by Winqual if each exception and its corresponding WHQL Errata ID, Incident ID, or Contingency ID number are listed in the standardized Readme form included in a test submission package.

When completing the WHQL Submission Readme form, you must use English ASCII characters, not DBCS characters.

For more information about the Readme form, please see the [Standardized Readme form required for WHQL test submissions](#).

Microsoft® Windows XP™ Professional x64 Edition

Browse	C:\5.0.13.64 Conexant Submission May 20 2005\upload
--------	---

16. The Select PnP IDs screen appears, as shown in [Figure 10](#).

IMPORTANT: Leave the Select PnP IDs screen unchecked.

Figure 10. Select PnP IDs

Select PnP IDs

Select the hardware IDs for the drivers you want distributed on the [Microsoft Windows Update](#) Web site.

Warning Only select hardware IDs if you want Microsoft to distribute your drivers using Windows Update. If you do not want Microsoft to distribute your drivers, click **Next** without selecting any hardware ID check boxes.

- PCI\VEN_14F1&DEV_8800&SUBSYS_001414F1
- PCI\VEN_14F1&DEV_8801&SUBSYS_001414F1
- PCI\VEN_14F1&DEV_8802&SUBSYS_001414F1
- PCI\VEN_14F1&DEV_8803&SUBSYS_001414F1
- PCI\VEN_14F1&DEV_8804&SUBSYS_001414F1
- PCI\VEN_14F1&DEV_8811&SUBSYS_001414F1

17. Set Driver Distribution Settings, as shown in [Figure 11](#).

IMPORTANT: Select Not Distributed.

Figure 11. Driver Distribution Settings

Driver Distribution Settings

Update the distribution settings for this driver package, and then click **Next**. See Help for information on Critical Drivers. **Note:** You need two full business days to add settings to a Windows Update site. Removing settings requires as little as two hours.

Manage your driver distribution settings:

Select all operating systems that apply for this submission.

Operating Systems	
<input checked="" type="checkbox"/>	Microsoft® Windows XP™ Professional x64 Edition

Select one of the following options to show where you want your driver available for distribution.

Windows Update Sites	
<input checked="" type="radio"/>	Not distributed
<input type="radio"/>	Windows Update Catalog site only
<input type="radio"/>	All Windows Update sites

The following sites are included in All Windows Update sites:

[Windows Update site](#) provides for updates based on your specific configuration.

[Windows Update Catalog site](#) enables administrators and advanced users to search for specific drivers to download.

Note: If a user interface is displayed during driver installation, the driver can only be distributed on the Windows Update Catalog site.

* For instructions on how to use the Microsoft® Windows® Update Beta site to test your driver, please see [About Windows Update Sites](#).

18. Enter your billing organization, referring to [Figure 12](#).

Figure 12. View Billing Info

View Billing Info

For a complete schedule of fees, please reference the [Authorized Testing Sites and Fees for Devi](#)

Billing invoices are sent four times per year, near the end of the current fiscal quarter. The paym Invoice Date. You will be unable to make submissions if your payment is delinquent.

Select the proper billing organization:

DID

9868 Scranton Rd
San Diego, CA 92121
USA

Phone: 858 713-3405

Fax: 858 713-4000

Tim.Willhelm@conexant.com;dale.proctor@conexant.com;Ferdinand.salvador@conexant.com;gar testcat@conexant.com;sheree.simpson@conexant.com;susanna.rosario@conexant.com;victor.ya

Purchase order or transaction number (required):

Provide a purchase order number for this submission if your company uses them. Please note th

- If your company does not use purchase order numbers, type "0" (zero) in the **Purchase ord**
- If you previously entered a purchase order number, you can select it from the **Previous pur**
- If you had not previously entered a purchase order number and your company uses them, typ

Previous purchase order numbers:

Purchase order number:

19. Select a Testing Location and press next.
20. Read the Legal Agreement and Type in your name exactly as it appears. Press Next.
21. Create upload package. You can verify the path names and then press Next.
22. Select the directory where the driver and upload directories are located
23. You will then get a jbxxxxxx.cab file in the directory you selected, as shown in [Figure 13](#):

Figure 13. Driver and Upload Directories



24. Use VeriSign to sign the driver.

NOTE:

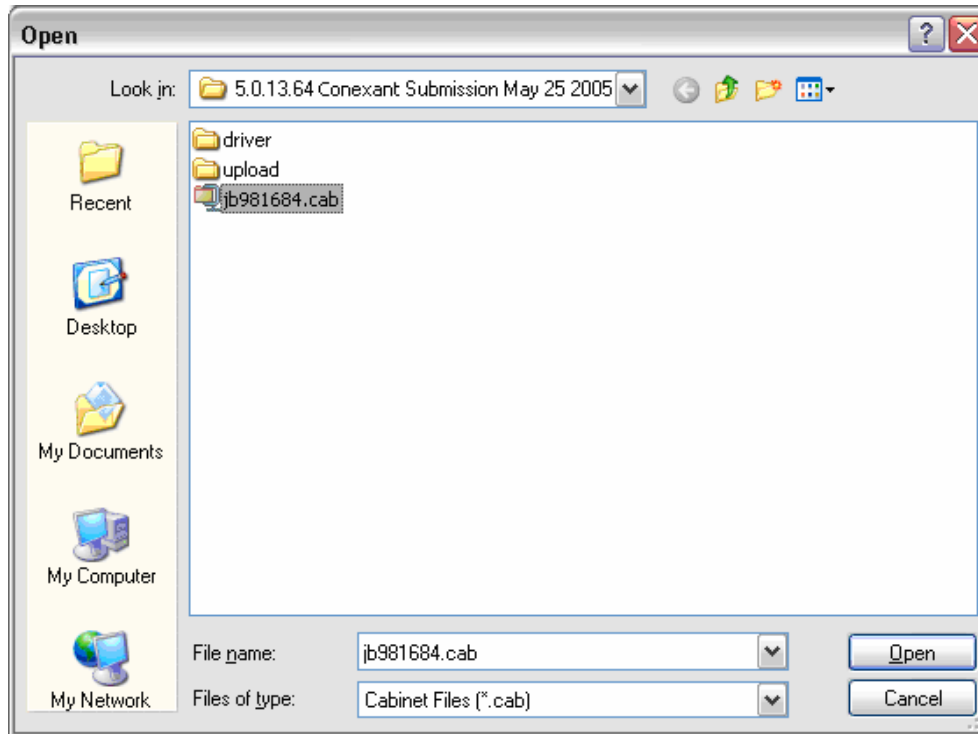
VeriSign was updated at the end of April, 2005. Make sure you have the correct version.

- a. Run the file signcode.exe.
- b. Press Next.

- c. Press browse and click the file jbxXXXX.cab, as shown in [Figure 14](#):

IMPORTANT: Be sure to have the correct file. The sign code may remember the location and time where it was last run.

Figure 14. Conexant Submission Screen



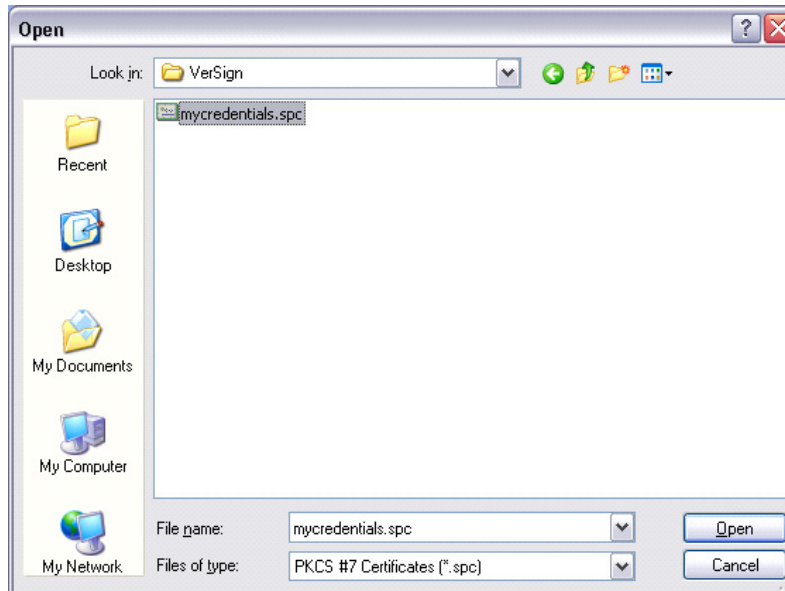
- d. Select All Files (*.*)
e. Select Custom, as shown in [Figure 15](#).

Figure 15. Signing Options



- f. On the Signature Certificate screen, press the Select From File button. Locate the VeriSign Folder and click the file, as shown in [Figure 17](#):

Figure 16. VeriSign Screen



- g. The Private Key is part of your VeriSign package from Microsoft. Click Browse, and select the file from the VeriSign Folder.
- h. Type the password.
- i. For the Hash Algorithm, use the default of sha1.
- j. For Additional Certificates, use the defaults, and press Next.

Figure 17. Additional Certificates Screen



- k. Leave the Data Description screen blank, as shown in [Figure 18](#):

Figure 18. Data Description

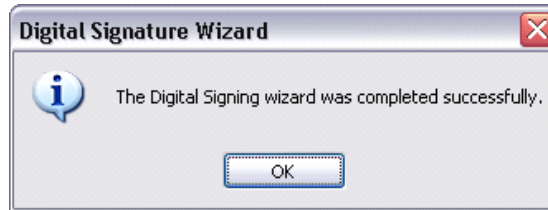
- l. Add timestamp, as shown in [Figure 19](#).

Figure 19. Timestamping

- m. Locate the timestamp.dll in the nfo.txt of the VeriSign folder.
 n. For VeriSign 2005, the dll is at:
<http://timestamp.verisign.com/scripts/timestamp.dll>
 o. Press Finish. Type in the Password.

- p. When the message shown in [Figure 20](#) appears, Press the OK button.

Figure 20. Digital Signing Wizard Message



25. At the screen shown in [Figure 21](#), upload the file that you signed jbxXXXXX.cab. Press upload now.
26. Press browse and submit.

Figure 21. Uploading the Submission Package

Upload your Submission Package

To complete your test submission, you must upload jb981684.cab to the Winqual server. First code sign jb981684.cab with your VeriSign Class-3 ID, then browse or type the path (include the file name) to the code-signed package, and click **Submit**. [More information about VeriSign IDs](#).

Original Path to this package:
[C:\5.0.13.64 Conexant Submission May 20 2005](#)

C:\5.0.13.64 Conexant Submission May 20 2005\jb981684.cab

27. Wait one to five working days for the results, and the cab should file. Results are usually posted between 6:00 to 8:00 PM each evening.

IMPORTANT: Do not press Cancel. It is a good idea to press View and Manage to prevent accidental pressing cancel.

Appendix A: Sample NTSC 64-Bit TV/FM Readme Document

Submission Information

Please provide the following information for your submission package:

Company name:	Conexant
Product name:	CX23881 Conexant PAL TV/FM
Unique Hardware ID (for example, PnP or PID- VID, if applicable)	PCI\VEN_14F1&DEV_8800&SUBSYS_001414F1 PCI\VEN_14F1&DEV_8801&SUBSYS_001414F1 PCI\VEN_14F1&DEV_8802&SUBSYS_001414F1 PCI\VEN_14F1&DEV_8803&SUBSYS_001414F1 PCI\VEN_14F1&DEV_8804&SUBSYS_001414F1 PCI\VEN_14F1&DEV_8811&SUBSYS_001414F1
Submission type (First-time, retest, update, reseller, etc.):	First Time
Reference ID #(s) (list any previous submission ID numbers required):	

Testing Exceptions

You must identify all issues found during Microsoft Windows logo testing. Use this section to list all test failures, tests not run, missing test logs, or inconclusive test results that apply to this unique submission only.

In the tables below, enter the following information for each unique testing exception included in your testing submission:

- ◆ **Windows operating system** affected
- ◆ **Failure Type**
- ◆ **ID number** of the applicable failure type
- ◆ Name of the **Failing Test**
- ◆ **Applicable Error Message** from the test log file

List one testing exception per table, and include all exceptions found in each operating systems included in your test submission.

NOTE:

If referencing an older contingency that does not have a valid ID associated with it, type **N/A** in the ID column and include a copy of the contingency letter in the test log folder of each applicable submission.

Operating system (Windows XP, Windows 2000, etc.)	Failure type (Contingency, Errata, Incident)	ID number
Windows XP 64	Errata	1163
Failing test name	Audio or Video Capture and Control	
Applicable error message (Type N/A if the error message or failing text is excessive or if there is no text)	The Audio or Video Capture and Control test fails video capture devices with tuners that display video in only the VideoInfo2 header format. One or more of the following failures occur, depending on the test case: VERIFY FAILED hr = 0x80004005 - Unspecified error ERROR: Failed to create capture graph Unspecified error (0x80004005)	
Additional information (for example, test system in a multiple system configuration)	Devices: Video Capture – Conexant 23880 Video Capture Video Capture – Conexant 2388x Crossbar, Video Capture – Conexant 2388x Tuner	

Operating system (Windows XP, Windows 2000, etc.)	Failure type (Contingency, Errata, Incident)	ID number
Windows XP 64	Errata	1275
Failing test name	Audio or Video Capture and Control	
Applicable error message (Type N/A if the error message or failing text is excessive or if there is no text)	The Audio or Video Capture and Control test checks the NTSC and PAL/SECAM formats, regardless of the input signal format. This event occurs when the operating system is unable to perform dynamic stream re-enumeration when the signal format changes between NTSC and PAL/SECAM. This situation results in a failure for the following test cases: 1204:18 Capture 1204:20 Capture, Preview 1204:24 Capture, Preview & Play Back 1204:41 Capture 1204:43 Capture, Preview 1204:47 Capture, Preview & Play Back 1204:49 Capture & Play Back 1204:59 IAMVideoProcAmp test 1204:63 IAMTVTuner	
Additional information (for example, test system in a multiple system configuration)	Devices: Video Capture – Conexant 23880 Video Capture Video Capture – Conexant 2388x Crossbar, Video Capture – Conexant 2388x Tuner	

Operating system (Windows XP, Windows 2000, etc.)	Failure type (Contingency, Errata, Incident)	ID number
Windows XP 64	HCT 12.1 Readme http://www.microsoft.com/whdc/devtools/HCT12-1readme.msp	N/A
Failing test name	x64 Calling Convention	
Applicable error message (Type N/A if the error message or failing text is excessive or if there is no text)	Test is optional: The x64 Calling Convention test is a new test in the HCT 12.1 kit for x64 drivers. This test is optional, but you are strongly encouraged to run the test for your x64 drivers. To run the test correctly, you must provide the path and file name of the x64 executable image file.	
Additional information (for example, test system in a multiple system configuration)	Devices: Video Capture – Conexant 23880 Video Capture Video Capture – Conexant 2388x Crossbar, Video Capture – Conexant 2388x Tuner	

Tip

If necessary, you can use the copy and paste features in Microsoft Word® to add additional tables to this document.

Additional Information

Use this section to include any additional information that is required for your submission type or requested by WHQL.
For example, list delta information between this submission and the parent submission.

Appendix B: Sample PAL 64-Bit TV/FM Readme Document

Submission Information

Please provide the following information for your submission package.

Company name:	Conexant
Product name:	CX23881 Conexant PAL TV/FM
Unique Hardware ID (for example, PnP or PID-VID, if applicable)	PCI\VEN_14F1&DEV_8800&SUBSYS_001414F1 PCI\VEN_14F1&DEV_8801&SUBSYS_001414F1 PCI\VEN_14F1&DEV_8802&SUBSYS_001414F1 PCI\VEN_14F1&DEV_8803&SUBSYS_001414F1 PCI\VEN_14F1&DEV_8804&SUBSYS_001414F1 PCI\VEN_14F1&DEV_8811&SUBSYS_001414F1
Submission type (First-time, retest, update, reseller, etc.):	First Time
Reference ID #(s) (list any previous submission ID numbers required):	

Testing Exceptions

You must identify all issues found during Microsoft Windows logo testing. Use this section to list all test failures, tests not run, missing test logs, or inconclusive test results that apply to this unique submission only.

In the tables below, enter the following information for each unique testing exception included in your testing submission:

- ◆ **Windows operating system** affected
- ◆ **Failure Type**
- ◆ **ID number** of the applicable failure type
- ◆ Name of the **Failing Test**
- ◆ **Applicable Error Message** from the test log file

List one testing exception per table, and include all exceptions found in each operating systems included in your test submission.

NOTE:

If referencing an older contingency that does not have a valid ID associated with it, type **N/A** in the ID column and include a copy of the contingency letter in the test log folder of each applicable submission.

Operating System (Windows XP, Windows 2000, etc.)	Failure Type (Contingency, Errata, Incident)	ID Number
Windows XP 64	Errata	1163
Failing test name	Audio or Video Capture and Control	
Applicable error message (Type N/A if the error message or failing text is excessive or if there is no text)	The Audio or Video Capture and Control test fails video capture devices with tuners that display video in only the VideoInfo2 header format. One or more of the following failures occur, depending on the test case: VERIFY FAILED hr = 0x80004005 - Unspecified error ERROR: Failed to create capture graph Unspecified error (0x80004005)	
Additional information (for example, test system in a multiple system configuration)	Devices: Video Capture – Conexant 23880 Video Capture Video Capture – Conexant 2388x Crossbar, Video Capture – Conexant 2388x Tuner	

Operating System (Windows XP, Windows 2000, etc.)	Failure Type (Contingency, Errata, Incident)	ID Number
Windows XP 64	Errata	1275
Failing test name	Audio or Video Capture and Control	
Applicable error message (Type N/A if the error message or failing text is excessive or if there is no text)	The Audio or Video Capture and Control test checks the NTSC and PAL/SECAM formats, regardless of the input signal format. This event occurs when the operating system is unable to perform dynamic stream re-enumeration when the signal format changes between NTSC and PAL/SECAM. This situation results in a failure for the following test cases: 1204:18 Capture 1204:20 Capture, Preview 1204:24 Capture, Preview & Play Back 1204:41 Capture 1204:43 Capture, Preview 1204:47 Capture, Preview & Play Back 1204:49 Capture & Play Back 1204:59 IAMVideoProcAmp test 1204:63 IAMTVTuner	
Additional information (for example, test system in a multiple system configuration)	Devices: Video Capture – Conexant 23880 Video Capture Video Capture – Conexant 2388x Crossbar, Video Capture – Conexant 2388x Tuner	

Operating system (Windows XP, Windows 2000, etc.)	Failure type (Contingency, Errata, Incident)	ID number
Windows XP 64	Errata	362
Failing test name	Audio or Video Capture and Control	
Applicable error message (Type N/A if the error message or failing text is excessive or if there is no text)	The Video Capture Driver Capture w/ Playback Closed Caption test (AMCapTst.exe) fails when running on a video capture device whose VBI pin provides support for PIN_CATEGORY_VBI but does not provide support for PIN_CATEGORY_CC.	
Additional information (for example, test system in a multiple system configuration)	Devices: Video Capture – Conexant 23880 Video Capture Video Capture – Conexant 2388x Crossbar, Video Capture – Conexant 2388x Tuner	

Operating System (Windows XP, Windows 2000, etc.)	Failure Type (Contingency, Errata, Incident)	ID Number
Windows XP 64	HCT 12.1 Readme http://www.microsoft.com/whdc/devtools/HCT12-1readme.msp	N/A
Failing test name	x64 Calling Convention	
Applicable error message (Type N/A if the error message or failing text is excessive or if there is no text)	Test is optional: The x64 Calling Convention test is a new test in the HCT 12.1 kit for x64 drivers. This test is optional, but you are strongly encouraged to run the test for your x64 drivers. To run the test correctly, you must provide the path and file name of the x64 executable image file.	
Additional information (for example, test system in a multiple system configuration)	Devices: Video Capture – Conexant 23880 Video Capture Video Capture – Conexant 2388x Crossbar, Video Capture – Conexant 2388x Tuner	

Tip

If necessary, you can use the copy and paste features in Microsoft Word® to add additional tables to this document.

Additional Information

Use this section to include any additional information that is required for your submission type or requested by WHQL. For example, list delta information between this submission and the parent submission.

--

Submission Information

Please provide the following information for your submission package.

Company name:	Conexant
Product name:	CX23881 Conexant PAL TV/FM
Unique Hardware ID (for example, PnP or PID-VID, if applicable)	PCI\VEN_14F1&DEV_8800&SUBSYS_001414F1 PCI\VEN_14F1&DEV_8801&SUBSYS_001414F1 PCI\VEN_14F1&DEV_8802&SUBSYS_001414F1 PCI\VEN_14F1&DEV_8803&SUBSYS_001414F1 PCI\VEN_14F1&DEV_8804&SUBSYS_001414F1 PCI\VEN_14F1&DEV_8811&SUBSYS_001414F1
Submission type (First-time, retest, update, reseller, etc.):	First Time
Reference ID #(s) (list any previous submission ID numbers required):	

Testing Exceptions

You must identify all issues found during Microsoft Windows logo testing. Use this section to list all test failures, tests not run, missing test logs, or inconclusive test results that apply to this unique submission only.

In the tables below, enter the following information for each unique testing exception included in your testing submission:

- ◆ **Windows operating system** affected
- ◆ **Failure Type**
- ◆ **ID number** of the applicable failure type
- ◆ Name of the **Failing Test**
- ◆ **Applicable Error Message** from the test log file

List one testing exception per table, and include all exceptions found in each operating systems included in your test submission.

NOTE:

If referencing an older contingency that does not have a valid ID associated with it, type N/A in the ID column and include a copy of the contingency letter in the test log folder of each applicable submission

Operating System (Windows XP, Windows 2000, etc.)	Failure Type (Contingency, Errata, Incident)	ID Number
Windows XP 64	Errata	1163
Failing test name	Audio or Video Capture and Control	
Applicable error message (Type N/A if the error message or failing text is excessive or if there is no text)	The Audio or Video Capture and Control test fails video capture devices with tuners that display video in only the VideoInfo2 header format. One or more of the following failures occur, depending on the test case: VERIFY FAILED hr = 0x80004005 - Unspecified error ERROR: Failed to create capture graph Unspecified error (0x80004005)	
Additional information (for example, test system in a multiple system configuration)	Devices: Video Capture – Conexant 23880 Video Capture Video Capture – Conexant 2388x Crossbar, Video Capture – Conexant 2388x Tuner	

Operating System (Windows XP, Windows 2000, etc.)	Failure Type (Contingency, Errata, Incident)	ID Number
Windows XP 64	Errata	1275
Failing test name	Audio or Video Capture and Control	
Applicable error message (Type N/A if the error message or failing text is excessive or if there is no text)	The Audio or Video Capture and Control test checks the NTSC and PAL/SECAM formats, regardless of the input signal format. This event occurs when the operating system is unable to perform dynamic stream re-enumeration when the signal format changes between NTSC and PAL/SECAM. This situation results in a failure for the following test cases: 1204:18 Capture 1204:20 Capture, Preview 1204:24 Capture, Preview & Play Back 1204:41 Capture 1204:43 Capture, Preview 1204:47 Capture, Preview & Play Back 1204:49 Capture & Play Back 1204:59 IAMVideoProcAmp test 1204:63 IAMTVTuner	
Additional information (for example, test system in a multiple system configuration)	Devices: Video Capture – Conexant 23880 Video Capture Video Capture – Conexant 2388x Crossbar, Video Capture – Conexant 2388x Tuner	

Operating System (Windows XP, Windows 2000, etc.)	Failure Type (Contingency, Errata, Incident)	ID Number
Windows XP 64	Errata	362
Failing test name	Audio or Video Capture and Control	
Applicable error message (Type N/A if the error message or failing text is excessive or if there is no text)	The Video Capture Driver Capture w/ Playback Closed Caption test (AMCapTst.exe) fails when running on a video capture device whose VBI pin provides support for PIN_CATEGORY_VBI but does not provide support for PIN_CATEGORY_CC.	
Additional information (for example, test system in a multiple system configuration)	Devices: Video Capture – Conexant 23880 Video Capture Video Capture – Conexant 2388x Crossbar, Video Capture – Conexant 2388x Tuner	

Operating System (Windows XP, Windows 2000, etc.)	Failure Type (Contingency, Errata, Incident)	ID Number
Windows XP 64	HCT 12.1 Readme http://www.microsoft.com/whdc/ devtools/HCT12-1readme.mspx	N/A
Failing test name	x64 Calling Convention	
Applicable error message (Type N/A if the error message or failing text is excessive or if there is no text)	Test is optional: The x64 Calling Convention test is a new test in the HCT 12.1 kit for x64 drivers. This test is optional, but you are strongly encouraged to run the test for your x64 drivers. To run the test correctly, you must provide the path and file name of the x64 executable image file.	
Additional information (for example, test system in a multiple system configuration)	Devices: Video Capture – Conexant 23880 Video Capture Video Capture – Conexant 2388x Crossbar, Video Capture – Conexant 2388x Tuner	

Tip

If necessary, you can use the copy and paste features in Microsoft Word® to add additional tables to this document.

Additional Information

Use this section to include any additional information that is required for your submission type or requested by WHQL.

For example, list delta information between this submission and the parent submission.

Appendix C: TV/FM Cards with MPEG Hardware Encoder

Do not run the Audio/Video Capture test for TV/FM cards that have hardware MPEG encoding. Add the following Errata ID to your readme document.

Operating System (Windows XP, Windows 2000, etc.)	Failure Type (Contingency, Errata, Incident)	ID Number
Windows XP	Errata	596
Failing test name	Audio or Video Capture and Control	
Applicable error message (Type N/A if the error message or failing text is excessive or if there is no text)	Video capture or TV tuning devices that support only hardware encoding must meet Windows logo requirements, namely that driver support must be based on WDM Stream class and that all hardware, middleware, and application software must implement Microsoft DirectShow (B11.1.1.1 and B11.1.1.3). However, the Audio or Video Capture and Control test (which verifies compliance with these requirements) is not required for video capture or TV tuning devices that support hardware encoding only.	
Additional information (for example, test system in a multiple system configuration)	Devices:	

www.conexant.com

General Information:

U.S. and Canada: (800) 854-8099

International: (949) 483-6996

Headquarters – Newport Beach

4000 MacArthur Blvd.

Newport Beach, CA 92660

